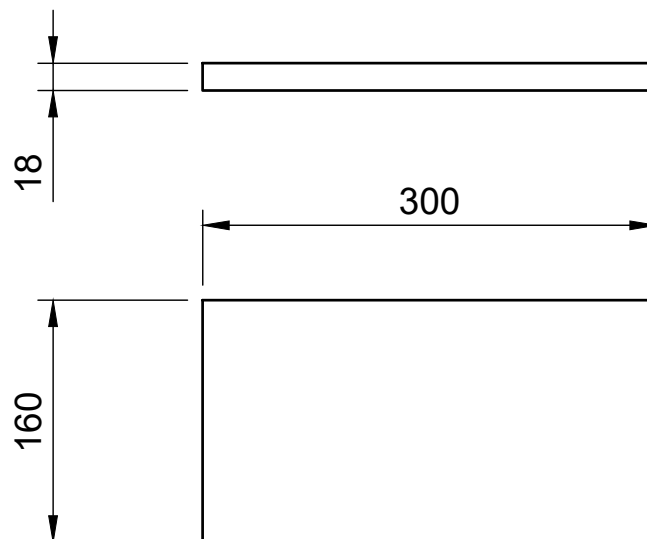


This part is always necessary because it is part of the acoustic design

XO may be mounted somewhere else



Dept.	Technical reference	Created by Bas Verboven 12-5-2020	Approved by Leon Huijgen		
		Document type	Document status		
		Title Liionidas OB XO Mount	DWG No.		
			Rev. 1	Date of issue 12-05-2020	Sheet 1/1